

DATA GOVERNANCE FRAMEWORK

The collection, organisation and exploitation of data is becoming an accepted method for gaining competitive advantage and commercial success. Data Governance seeks to define the behaviours of staff within an enterprise such that high quality data is acquired and exploited for the benefit of the staff and the objectives of the enterprise.

THE CHALLENGE

The management of data has traditionally been left to individuals, departments or teams and the resulting data anarchy is no longer acceptable, or sustainable. Whilst anarchy is not acceptable, if very strict governance is enforced the pace of change is too slow. Indeed the manager who bypasses the IT department that has a backlog of change requests and creates his own solutions is very common. Consequently, a regulatory approach is required that has power to enforce when required, whilst allowing employees the agility to get on with their work. Glue Reply take a real-world approach to governance, applying robust controls where necessary and a light-touch where appropriate.

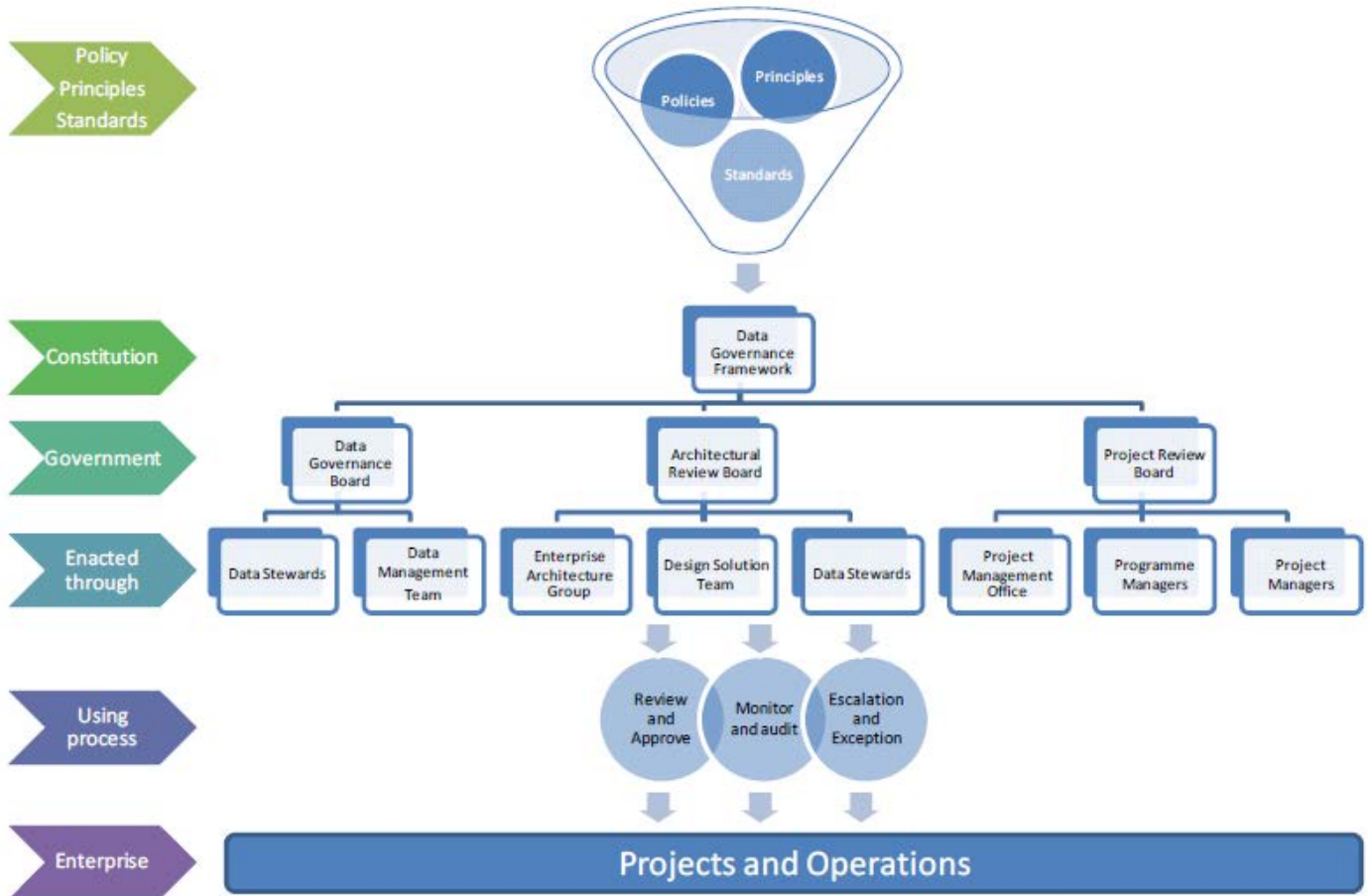
OVERVIEW

A Governance Framework lays out the of scope, processes, stakeholders, bodies and deliverables that comprise the data governance regime to be implemented to govern data across an enterprise. Data Governance requires on-going monitoring to ensure compliance and an escalation process to address issues and grant dispensations. Data Governance provides the decision-making and oversight to ensure that the data supports the business and its systems and that the data is treated as a corporate asset.

APPROACH

Data Governance is a challenging discipline to implement across an organisation and even when it is done well, its value can be undermined if it is not implemented in concert with the other key governance functions necessary for an IT function to effectively support business change. Glue Reply have developed an overarching framework that governs not only the data but also change to the repositories and applications that store and process data, and the projects which implement these

changes. This can be implemented incrementally and flexibly to suit the needs and requirements of your organisation.



POLICIES, PRINCIPLES & STANDARDS

Glue Reply has a reference set of Data Governance Policies and Principles that can be fine-tuned to the needs of an organisation. Practical knowledge of industry standards enables glue to recommend relevant standards and to help an organisation tailor their implementation to its specific needs.

GOVERNANCE BODIES

The need for Data Governance is driven by a fundamental observation that continuous change is in the nature of all of enterprises. Data changes as values are created, updated and deleted.

The structure of data repositories change as they are altered to meet business need. Projects implement business change which has implications for data and the data structures.

The governance framework contains three executive bodies that manage the various categories of change. The bodies delegate their authority through agents that are responsible for carrying out the work.

Kind of change	Accountable Body	Agents of Governance
Change in Data	Data Governance Board	Data Steward, Data Management Team, Data Quality Working Groups
Change in Data Repository Structure	Architectural Review Board	Solution Design Team, Data Stewards
Change in Business Capability	Project Review Board	Project Management Office, Project Managers

The **Data Governance Board** provides the overall management of the design, use, integrity and quality of organisational data, the decision-making and oversight to ensure that the data supports the business and its systems and ensures that data is treated as a corporate asset. The Data Governance Group will delegate authority to the Data Management Team and its network of Data Stewards.

The **Programme Review Board** will approve or reject projects and determine relative priorities. The Programme Review Board will typically delegate authority to the Programme Management Office and the Data CoE would normally interact with the Programme Review Board, via the Programme Management Office.

The **Architecture Review Board** will approve Solution Architectures and assess requests for dispensations to the Enterprise Architecture. The Architecture Review Board will typically delegate authority to the Enterprise Architecture Group and the Data Management Team would normally interact with the Architecture Review Board via the Enterprise Architecture Group

PROCESSES

MONITORING & AUDITING. Are essential aspects of a Data Governance regime, ensuring the on-going compliance with policies, standards and good practices.

ESCALATION & EXCEPTION MANAGEMENT. Issues identified as a result of Monitoring & Auditing processes, or from the Design Review processes will be escalated where necessary to the appropriate governance body. Any rework or dispensations will need to be managed to conclusion.

DESIGN REVIEW. Ensures that the data aspects of a solution are architected, designed and delivered in conformance to the reference data architecture.



Glue Reply is UK's leading consulting services organisation focused exclusively on optimising IT/Business alignment and minimising the cost of business and IT technology change. Our core proposition is to help organisations maximise the value from their change and technology investments by helping them define, design, implement and resource best practice:

- Enterprise architecture and business/technology change management processes, roadmaps and competencies;
- Business design and process management initiatives;
- SOA, integration and data management platforms.

Glue Reply UK
www.replyltd.co.uk